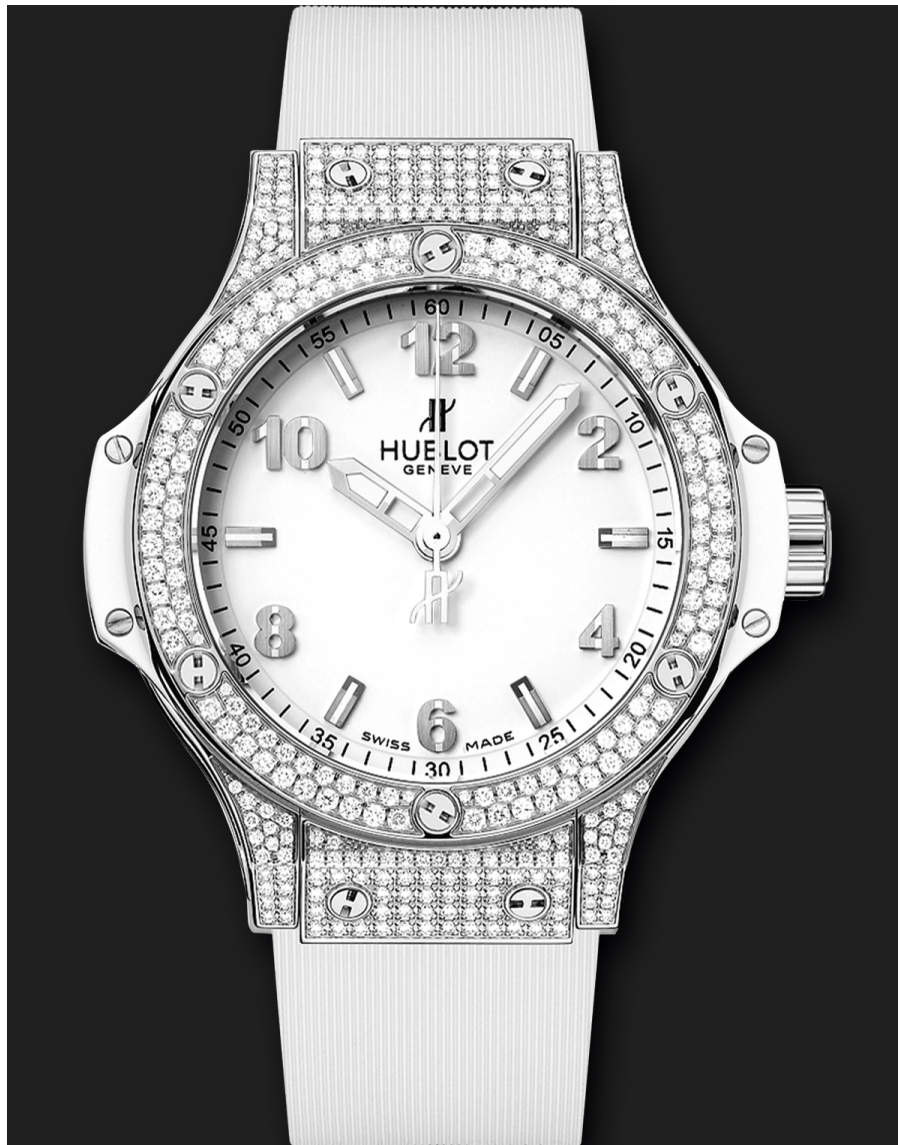


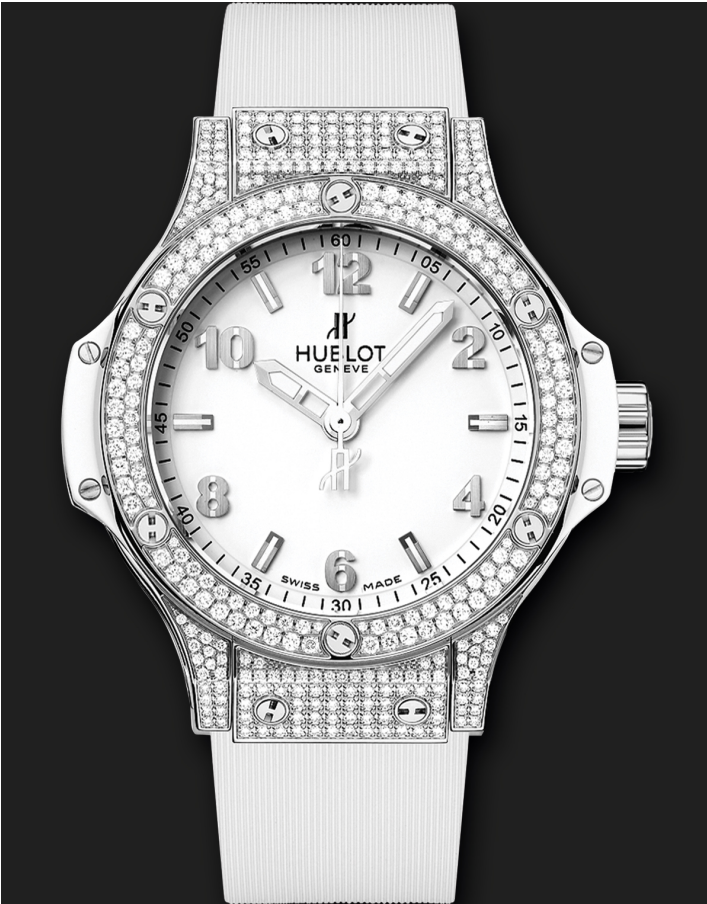


**BIG BANG**

**Steel White Pavé<sup>®</sup>**  
HUB2900 QUARTZ MOVEMENT



**BIG BANG**



**STEEL WHITE PAVÉ**  
HUB2900 QUARTZ MOVEMENT

REF: 361.SE.2010.RW.1704

---

**Details & Materialien**

**Gehäuse**

Polished Stainless Steel set with 194 Diamonds for 0.82ct

**Lünette**

Polished Stainless Steel set with 126 Diamonds for 0.87ct and 6 H-shaped Titanium Screws

**Zifferblatt**

Mat White Dial - Satin-finished Rhodium Plated Appliques - Polished Rhodium Hands with White Luminescent

**Uhrwerk**

HUB2900 Quartz Movement

**Armbandmaterial**

White Lined Rubber Strap - Deployant Buckle Clasp in Stainless Steel