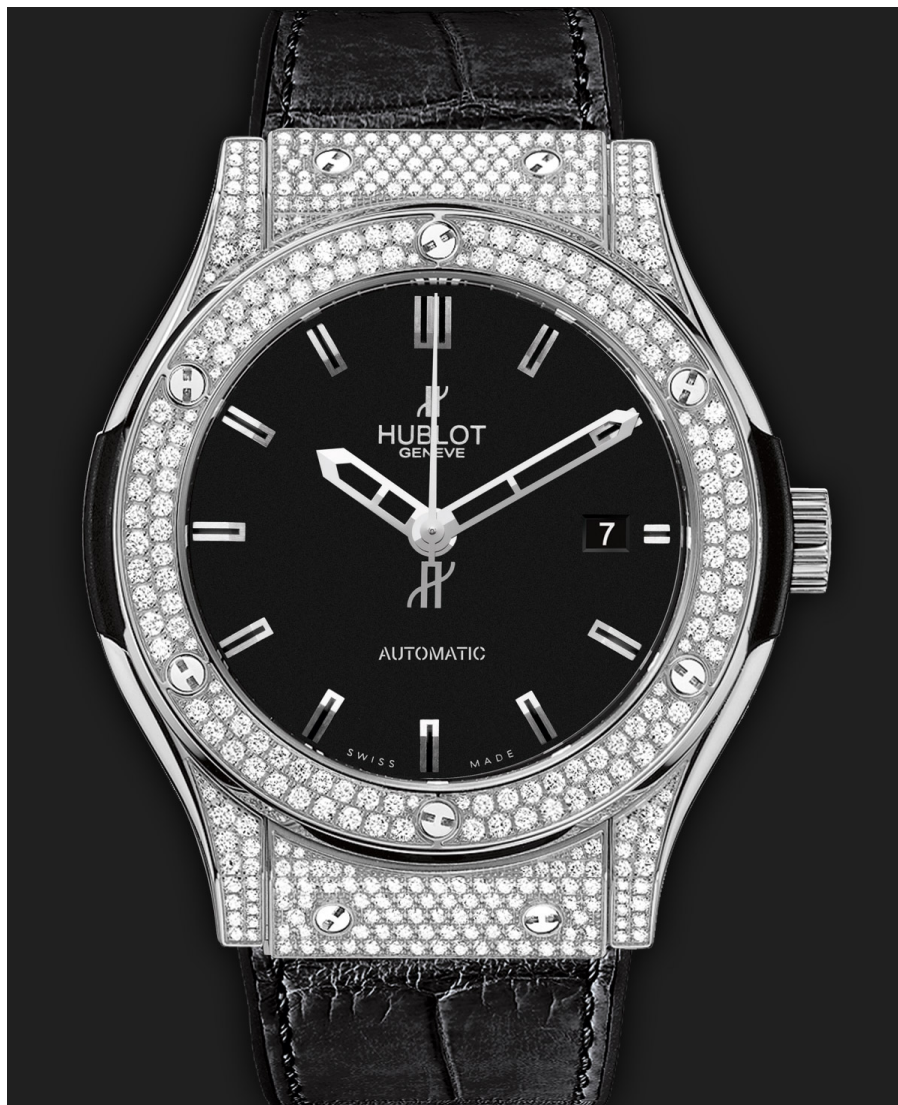




CLASSIC FUSION

Titanium Pavé fÂ©
HUB1110 SELF-WINDING
MOVEMENT



CLASSIC FUSION



TITANIUM PAVé
HUB1110 SELF-WINDING
MOVEMENT

REF: 542.NX.1170.LR.1704

Details & Materials

Case

Polished Titanium set with 228 Diamonds for 1.22ct

Bezel

Polished Titanium set with 138 Diamonds for 0.89ct
with 6 H-shaped Titanium Screws

Dial

Mat Black Dial - Satin-finished Rhodium Plated
Appliques - Polished Rhodium Plated Hands

Movement

HUB1110 Self-winding Movement

Strap material

Black Rubber and Alligator Strap - Deployant Buckle
Clasp in Stainless Steel