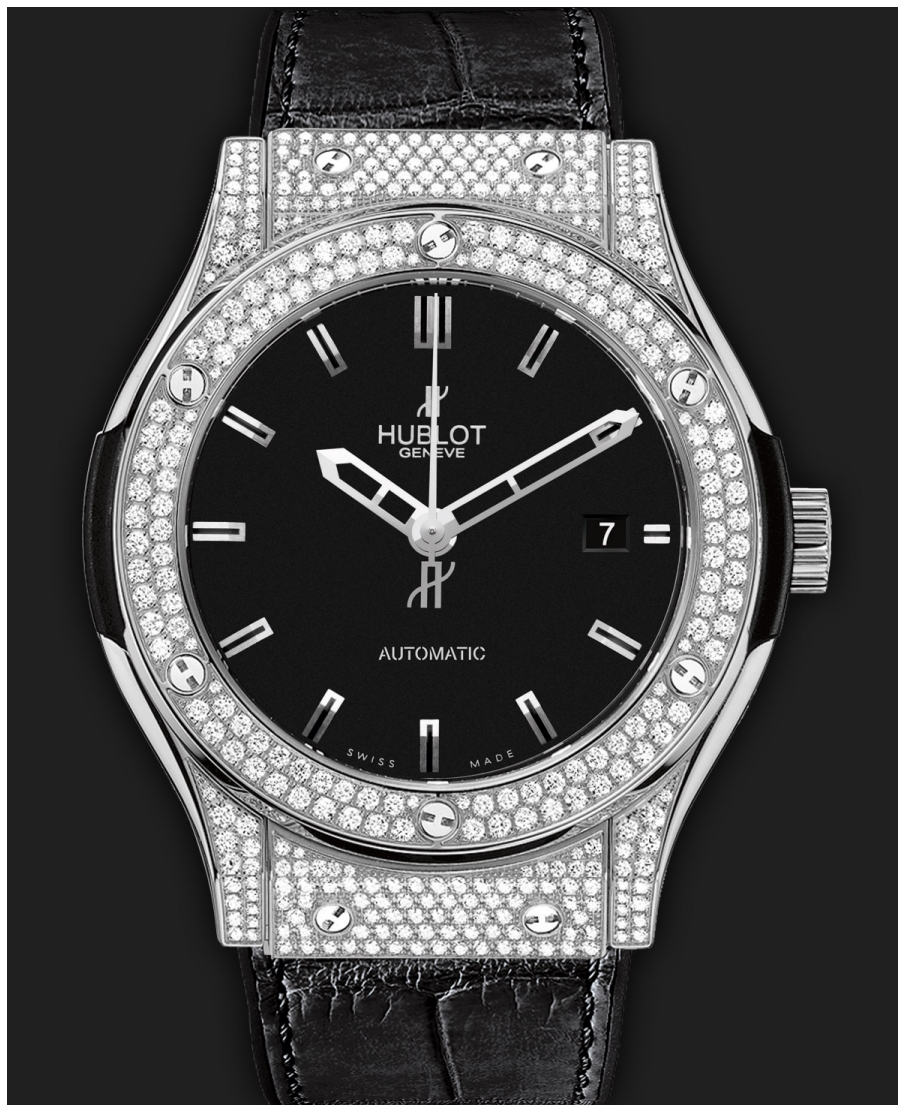




CLASSIC FUSION

Titanium Pavé fÂ©
HUB1110 SELF-WINDING
MOVEMENT



CLASSIC FUSION



TITANIUM PAVÉ HUB1110 SELF-WINDING MOVEMENT

REF: 542.NX.1170.LR.1704

Detalhes & Materiais

Caixa

Polished Titanium set with 228 Diamonds for 1.22ct

Coroa

Polished Titanium set with 138 Diamonds for 0.89ct with 6 H-shaped Titanium Screws

Mostrador

Mat Black Dial - Satin-finished Rhodium Plated Appliques - Polished Rhodium Plated Hands

Movimento

HUB1110 Self-winding Movement

Material pulseira

Black Rubber and Alligator Strap - Deployant Buckle Clasp in Stainless Steel